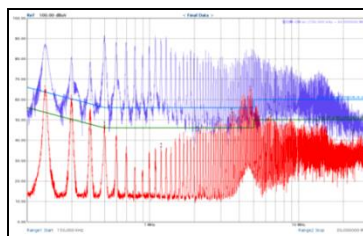
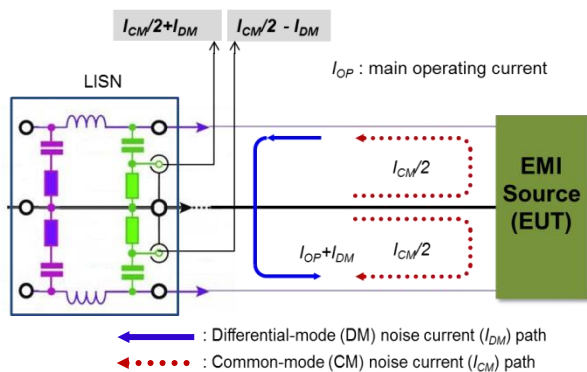


EMI Analyzer



Model : EA-300

- World-FIRST EMI solution provider
- Capable of perfect EMI Noise solution
- Enabling EMI component selection in advance

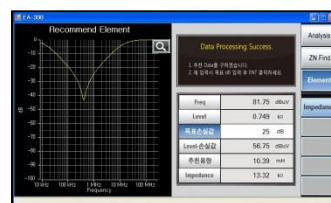
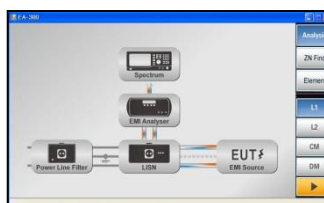


Noises from EUT through LISN is displayed on EMI Receiver and the displayed noise is the mixture of Common-Mode(CM) noise and Differential-Mode(DM) noise.

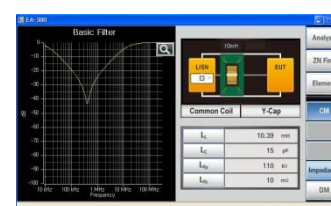
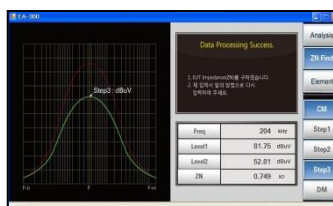
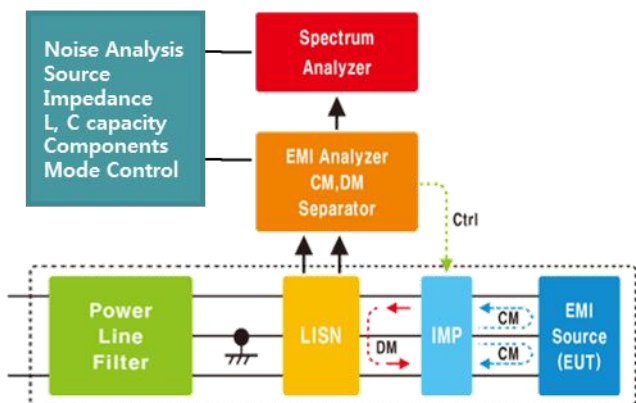
Because two different type of noises are shown as the mixed results, it is not-an-easy target to reach EMI solution(debugging)., causing a lot of time and effort (Try and Error). By measuring and analyzing each noise (CM & DM) respectively, the approach to the solution can be clearly correct and accurate path. The solution results – in general, EMI Filters - can be designed easier, quicker and in accurate performance. Furthermore, the solution is possible to be proved by theoretic and visual data.

Key Characteristics of EMI ANALYZER

- Analyzing EMI noises in characteristics respectively, Common-Mode(CM) and Differential-Mode(DM)
- EUT Source Impedance Analysis
- Most powerful EMI Debugging Instruments
- Components performance evaluation (Coil and Capacitor)
- Trial EMI Filter design and performance simulation
- Providing Insertion Loss graph of the selected components
- Theoretic Noise analysis and solution approach



System Configuration



Impedance module

